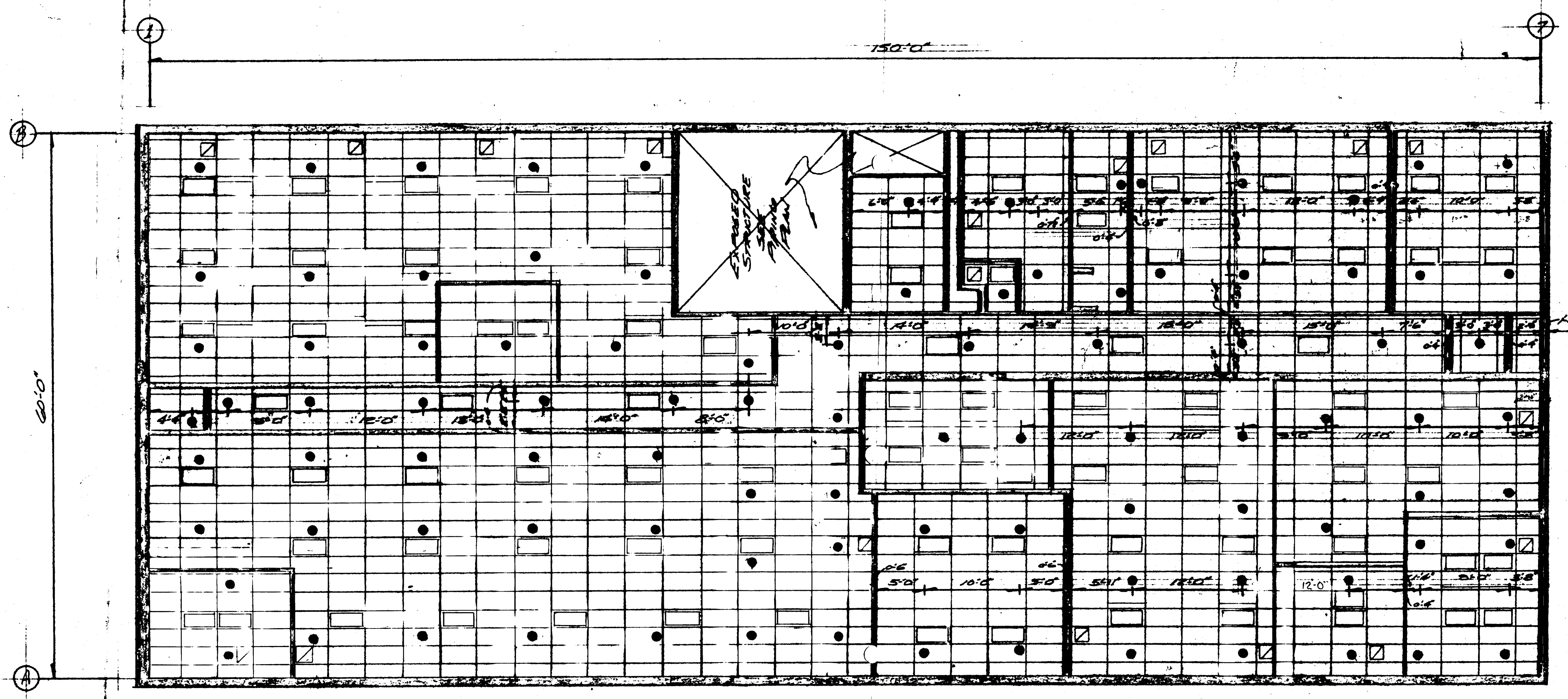
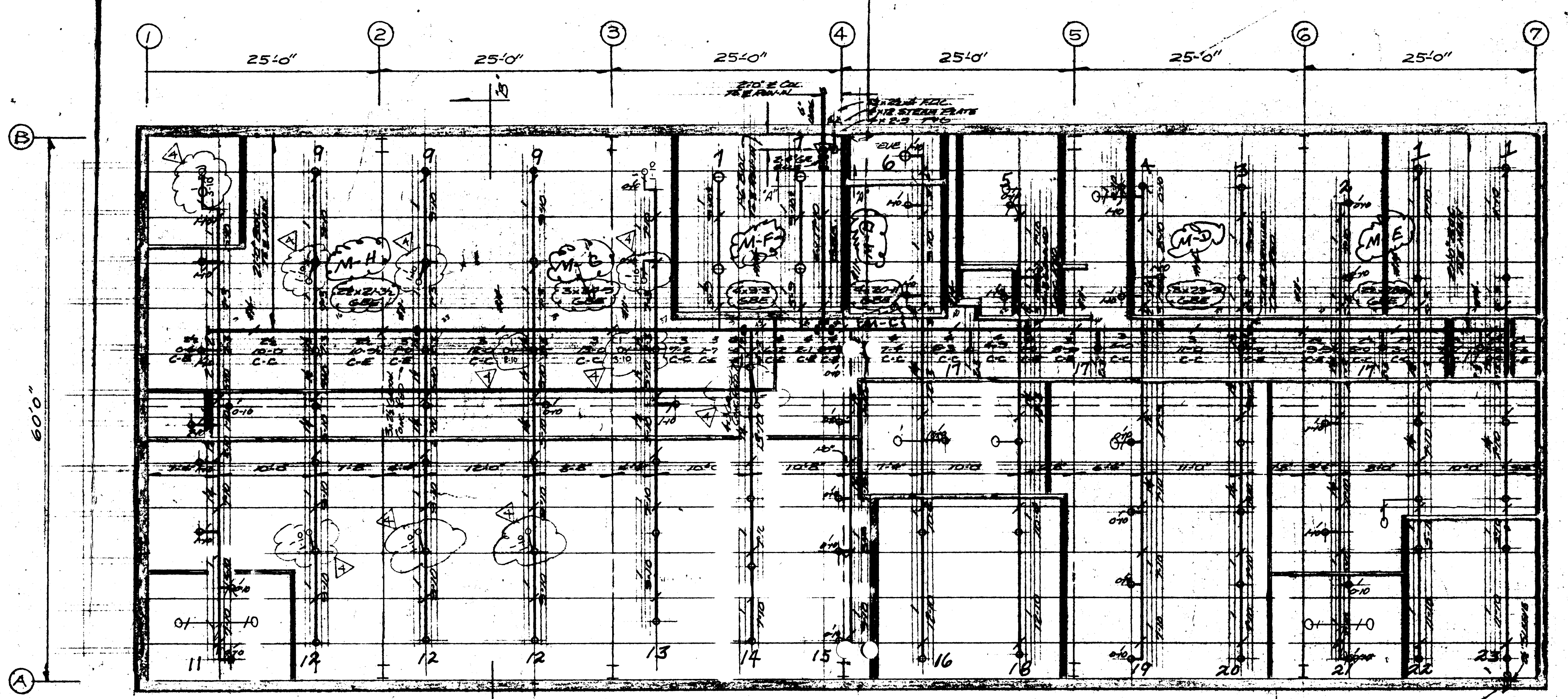


It is hereby certified that the material (equipment) shown and marked in this drawing was submitted through drawings, catalogs, etc. approved/proposed to be incorporated into the contract drawings and can be used in accordance with the contract drawings and specifications for Government approval.

Authorized Reviewer: W. B. Cook Date: 9-18-54  
 Certified by: \_\_\_\_\_



REFLECTED CEILING PLAN  
 SCALE: 3/8" = 1'-0"



SPRINKLER PIPING PLAN  
 SCALE: 3/8" = 1'-0"

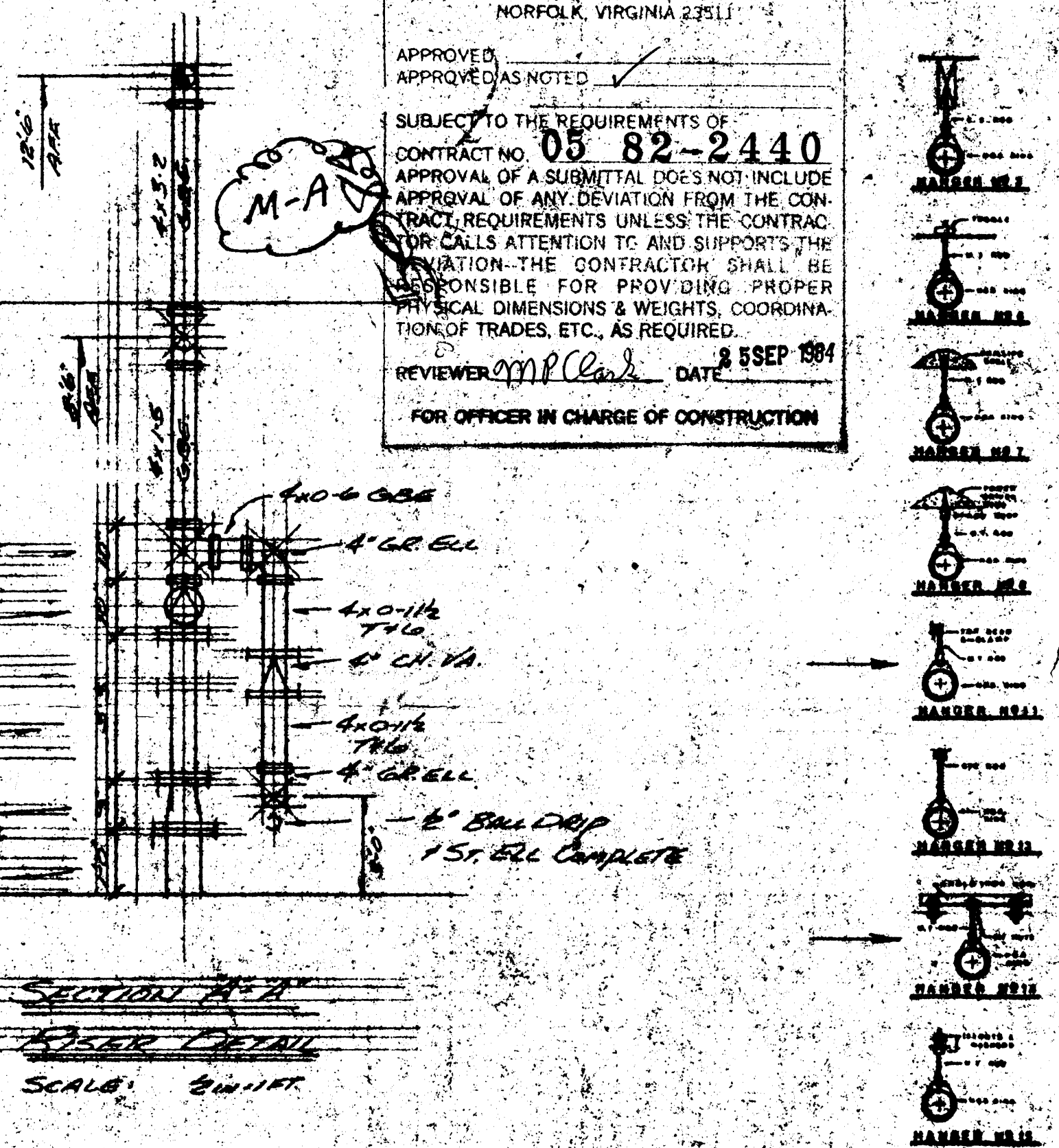
Hangers  
 C.O.S.

ATLANTIC DIVISION  
 NAVAL FACILITIES ENGINEERING COMMAND  
 NORFOLK, VIRGINIA 23511

APPROVED: \_\_\_\_\_  
 APPROVED AS NOTED: \_\_\_\_\_

SUBJECT TO THE REQUIREMENTS OF CONTRACT NO. 05 82-2440 APPROVAL OF ANY DEVIATION FROM THE CONTRACT REQUIREMENTS UNLESS THE CONTRACTOR CALLS ATTENTION TO AND SUPPORTS THE DEVIATION. THE CONTRACTOR SHALL BE RESPONSIBLE FOR PROVIDING PROPER SCALING DIMENSIONS & WEIGHTS, COORDINATION OF TRADES, ETC., AS REQUIRED.

REVIEWER: W. B. Cook DATE: 8 SEP 1954  
 FOR OFFICER IN CHARGE OF CONSTRUCTION



SECTION A-A  
 CEILING DETAIL  
 SCALE: 3/8" = 1'-0"

As BUILT FILE # 234

SPRINKLERS			PROJECT
NO.	TYPE	QUANTITY	NAVAL FACILITIES ENGINEERING COMMAND
1	1/2" N.P.	1	NAVAL FACILITIES ENGINEERING COMMAND
2	1/2" N.P.	1	NAVAL FACILITIES ENGINEERING COMMAND
3	1/2" N.P.	1	NAVAL FACILITIES ENGINEERING COMMAND
4	1/2" N.P.	1	NAVAL FACILITIES ENGINEERING COMMAND
5	1/2" N.P.	1	NAVAL FACILITIES ENGINEERING COMMAND
6	1/2" N.P.	1	NAVAL FACILITIES ENGINEERING COMMAND
7	1/2" N.P.	1	NAVAL FACILITIES ENGINEERING COMMAND
8	1/2" N.P.	1	NAVAL FACILITIES ENGINEERING COMMAND
9	1/2" N.P.	1	NAVAL FACILITIES ENGINEERING COMMAND
10	1/2" N.P.	1	NAVAL FACILITIES ENGINEERING COMMAND
11	1/2" N.P.	1	NAVAL FACILITIES ENGINEERING COMMAND
12	1/2" N.P.	1	NAVAL FACILITIES ENGINEERING COMMAND
13	1/2" N.P.	1	NAVAL FACILITIES ENGINEERING COMMAND
14	1/2" N.P.	1	NAVAL FACILITIES ENGINEERING COMMAND
15	1/2" N.P.	1	NAVAL FACILITIES ENGINEERING COMMAND
16	1/2" N.P.	1	NAVAL FACILITIES ENGINEERING COMMAND
17	1/2" N.P.	1	NAVAL FACILITIES ENGINEERING COMMAND
18	1/2" N.P.	1	NAVAL FACILITIES ENGINEERING COMMAND
19	1/2" N.P.	1	NAVAL FACILITIES ENGINEERING COMMAND
20	1/2" N.P.	1	NAVAL FACILITIES ENGINEERING COMMAND
21	1/2" N.P.	1	NAVAL FACILITIES ENGINEERING COMMAND
22	1/2" N.P.	1	NAVAL FACILITIES ENGINEERING COMMAND
23	1/2" N.P.	1	NAVAL FACILITIES ENGINEERING COMMAND
24	1/2" N.P.	1	NAVAL FACILITIES ENGINEERING COMMAND
25	1/2" N.P.	1	NAVAL FACILITIES ENGINEERING COMMAND
26	1/2" N.P.	1	NAVAL FACILITIES ENGINEERING COMMAND
27	1/2" N.P.	1	NAVAL FACILITIES ENGINEERING COMMAND
28	1/2" N.P.	1	NAVAL FACILITIES ENGINEERING COMMAND
29	1/2" N.P.	1	NAVAL FACILITIES ENGINEERING COMMAND
30	1/2" N.P.	1	NAVAL FACILITIES ENGINEERING COMMAND
31	1/2" N.P.	1	NAVAL FACILITIES ENGINEERING COMMAND
32	1/2" N.P.	1	NAVAL FACILITIES ENGINEERING COMMAND
33	1/2" N.P.	1	NAVAL FACILITIES ENGINEERING COMMAND
34	1/2" N.P.	1	NAVAL FACILITIES ENGINEERING COMMAND
35	1/2" N.P.	1	NAVAL FACILITIES ENGINEERING COMMAND
36	1/2" N.P.	1	NAVAL FACILITIES ENGINEERING COMMAND
37	1/2" N.P.	1	NAVAL FACILITIES ENGINEERING COMMAND
38	1/2" N.P.	1	NAVAL FACILITIES ENGINEERING COMMAND
39	1/2" N.P.	1	NAVAL FACILITIES ENGINEERING COMMAND
40	1/2" N.P.	1	NAVAL FACILITIES ENGINEERING COMMAND
41	1/2" N.P.	1	NAVAL FACILITIES ENGINEERING COMMAND
42	1/2" N.P.	1	NAVAL FACILITIES ENGINEERING COMMAND
43	1/2" N.P.	1	NAVAL FACILITIES ENGINEERING COMMAND
44	1/2" N.P.	1	NAVAL FACILITIES ENGINEERING COMMAND
45	1/2" N.P.	1	NAVAL FACILITIES ENGINEERING COMMAND
46	1/2" N.P.	1	NAVAL FACILITIES ENGINEERING COMMAND
47	1/2" N.P.	1	NAVAL FACILITIES ENGINEERING COMMAND
48	1/2" N.P.	1	NAVAL FACILITIES ENGINEERING COMMAND
49	1/2" N.P.	1	NAVAL FACILITIES ENGINEERING COMMAND
50	1/2" N.P.	1	NAVAL FACILITIES ENGINEERING COMMAND
51	1/2" N.P.	1	NAVAL FACILITIES ENGINEERING COMMAND
52	1/2" N.P.	1	NAVAL FACILITIES ENGINEERING COMMAND
53	1/2" N.P.	1	NAVAL FACILITIES ENGINEERING COMMAND
54	1/2" N.P.	1	NAVAL FACILITIES ENGINEERING COMMAND
55	1/2" N.P.	1	NAVAL FACILITIES ENGINEERING COMMAND
56	1/2" N.P.	1	NAVAL FACILITIES ENGINEERING COMMAND
57	1/2" N.P.	1	NAVAL FACILITIES ENGINEERING COMMAND
58	1/2" N.P.	1	NAVAL FACILITIES ENGINEERING COMMAND
59	1/2" N.P.	1	NAVAL FACILITIES ENGINEERING COMMAND
60	1/2" N.P.	1	NAVAL FACILITIES ENGINEERING COMMAND
61	1/2" N.P.	1	NAVAL FACILITIES ENGINEERING COMMAND
62	1/2" N.P.	1	NAVAL FACILITIES ENGINEERING COMMAND
63	1/2" N.P.	1	NAVAL FACILITIES ENGINEERING COMMAND
64	1/2" N.P.	1	NAVAL FACILITIES ENGINEERING COMMAND
65	1/2" N.P.	1	NAVAL FACILITIES ENGINEERING COMMAND
66	1/2" N.P.	1	NAVAL FACILITIES ENGINEERING COMMAND
67	1/2" N.P.	1	NAVAL FACILITIES ENGINEERING COMMAND
68	1/2" N.P.	1	NAVAL FACILITIES ENGINEERING COMMAND
69	1/2" N.P.	1	NAVAL FACILITIES ENGINEERING COMMAND
70	1/2" N.P.	1	NAVAL FACILITIES ENGINEERING COMMAND
71	1/2" N.P.	1	NAVAL FACILITIES ENGINEERING COMMAND
72	1/2" N.P.	1	NAVAL FACILITIES ENGINEERING COMMAND
73	1/2" N.P.	1	NAVAL FACILITIES ENGINEERING COMMAND
74	1/2" N.P.	1	NAVAL FACILITIES ENGINEERING COMMAND
75	1/2" N.P.	1	NAVAL FACILITIES ENGINEERING COMMAND
76	1/2" N.P.	1	NAVAL FACILITIES ENGINEERING COMMAND
77	1/2" N.P.	1	NAVAL FACILITIES ENGINEERING COMMAND
78	1/2" N.P.	1	NAVAL FACILITIES ENGINEERING COMMAND
79	1/2" N.P.	1	NAVAL FACILITIES ENGINEERING COMMAND
80	1/2" N.P.	1	NAVAL FACILITIES ENGINEERING COMMAND
81	1/2" N.P.	1	NAVAL FACILITIES ENGINEERING COMMAND
82	1/2" N.P.	1	NAVAL FACILITIES ENGINEERING COMMAND
83	1/2" N.P.	1	NAVAL FACILITIES ENGINEERING COMMAND
84	1/2" N.P.	1	NAVAL FACILITIES ENGINEERING COMMAND
85	1/2" N.P.	1	NAVAL FACILITIES ENGINEERING COMMAND
86	1/2" N.P.	1	NAVAL FACILITIES ENGINEERING COMMAND
87	1/2" N.P.	1	NAVAL FACILITIES ENGINEERING COMMAND
88	1/2" N.P.	1	NAVAL FACILITIES ENGINEERING COMMAND
89	1/2" N.P.	1	NAVAL FACILITIES ENGINEERING COMMAND
90	1/2" N.P.	1	NAVAL FACILITIES ENGINEERING COMMAND
91	1/2" N.P.	1	NAVAL FACILITIES ENGINEERING COMMAND
92	1/2" N.P.	1	NAVAL FACILITIES ENGINEERING COMMAND
93	1/2" N.P.	1	NAVAL FACILITIES ENGINEERING COMMAND
94	1/2" N.P.	1	NAVAL FACILITIES ENGINEERING COMMAND
95	1/2" N.P.	1	NAVAL FACILITIES ENGINEERING COMMAND
96	1/2" N.P.	1	NAVAL FACILITIES ENGINEERING COMMAND
97	1/2" N.P.	1	NAVAL FACILITIES ENGINEERING COMMAND
98	1/2" N.P.	1	NAVAL FACILITIES ENGINEERING COMMAND
99	1/2" N.P.	1	NAVAL FACILITIES ENGINEERING COMMAND
100	1/2" N.P.	1	NAVAL FACILITIES ENGINEERING COMMAND



WILLIAMSON FIRE SPRINKLER CO., INC.  
 P. O. BOX 1933  
 WILLIAMSTON, N. C. 27992