

1

2

3

4

5

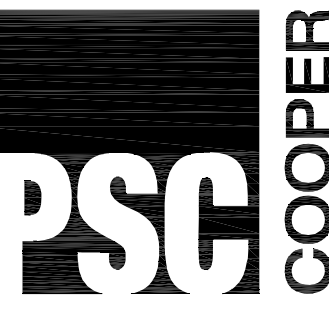
D

C

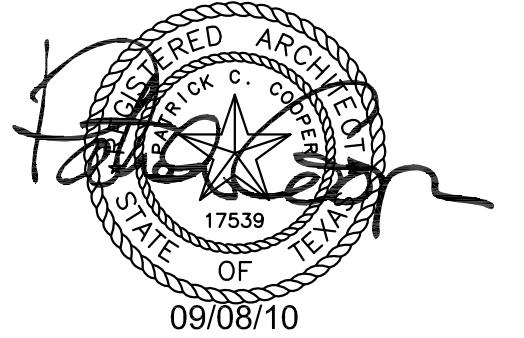
B

A

SHEET NO.	65% SUBMITTAL	FINAL SUBMITTAL	FINAL CORRECTED	AMMENDMENT 6	TITLE	SHEET NO.	65% SUBMITTAL	FINAL SUBMITTAL	FINAL CORRECTED	AMMENDMENT 6	TITLE
GENERAL						PLUMBING					
G-001	●	●	●		COVER SHEET	P-101	●	●	●		FLOOR PLAN PLUMBING
G-002	●	●	●	●	INDEX OF DRAWINGS	P-201	●	●	●		PLUMBING SCHEDULES
G-003	●	●	●		ABBREVIATIONS & LEGENDS	P-202			●		PLUMBING DETAILS
G-004	●	●	●		ACCESSIBILITY GUIDELINES - BUILDING						
G-005	●	●	●		ACCESSIBILITY STANDARDS - SITE						
						MECHANICAL					
						M-101	●	●	●		FLOOR PLAN MECHANICAL
CIVIL						M-201	●	●	●		MECHANICAL DETAILS AND SCHEDULES
CA100			●		EXISTING CONDITIONS						
CA101	●	●	●		TRACK DEMOLITION PLAN						
CA102	●	●	●		TRACK LAYOUT PLAN	ELECTRICAL					
CA103	●	●	●		SITE GRADING PLAN	E-101	●	●	●		LIGHTING FLOOR PLAN
CA501	●	●	●		MISCELLANEOUS DETAILS	E-201	●	●	●		POWER FLOOR PLAN
CB100			●		EXISTING CONDITIONS	E-301	●	●	●		ELECTRICAL DUGOUT PLAN
CB101	●	●	●		OVERALL SITE PLAN	E-401	●	●	●	●	ELECTRICAL SITE PLAN
CB102	●	●	●		ENLARGED SITE PLAN	E-501	●	●	●	●	ELECTRICAL SCHEDULES & RISER
CB103	●	●	●		GRADING PLAN	E-502	●	●	●		LIGHTING FIXTURES
CB104	●	●	●	●	UTILITY PLAN 1 OF 2	E-503	●	●	●		LIGHTING FIXTURES
CB105	●	●	●		UTILITY PLAN 2 OF 2						
CB106			●		SEWER AND LIFT STATION DETAILS						
CB501			●		MISCELLANEOUS UTILITY DETAILS						
STRUCTURAL											
S-001	●	●	●		GENERAL NOTES AND TYPICAL DETAILS						
S-002	●	●	●		GENERAL NOTES AND TYPICAL DETAILS						
S-003	●	●	●		GENERAL NOTES AND TYPICAL DETAILS						
S-004	●	●	●		GENERAL NOTES AND TYPICAL DETAILS						
S-101	●	●	●		FOUNDATION PLAN AND DETAILS						
S-101B	●	●	●		GIRLS SOFTBALL DUGOUT FOUNDATION & FRAMING PLANS						
S-102	●	●	●		FRAMING PLAN AND DETAILS						
ARCHITECTURAL											
A-101	●	●	●		DIMENSIONED & ANNOTATED FLOOR PLANS						
A-101A	●	●	●		REFLECTED CEILING & ROOF PLANS						
A-101B	●	●	●		GIRLS SOFTBALL DUGOUT PLANS						
A-201	●	●	●		EXTERIOR ELEVATION						
A-202	●	●	●		INTERIOR ELEVATIONS						
A-301	●	●	●		BUILDING SECTIONS						
A-302	●	●	●		WALL SECTIONS						
A-302A	●	●	●		WALL SECTIONS						
A-302B	●	●	●		WALL SECTIONS						
A-401	●	●	●		ENLARGED PLANS						
A-501	●	●	●		DOOR DETAILS						
A-502	●	●	●		DETAILS						
A-601	●	●	●		SCHEDULES						



PARKHILL SMITH & COOPER



TITLE IX ATHLETIC IMPROVEMENTS MCB CAMP LEJEUNE, NC

KEY PLAN

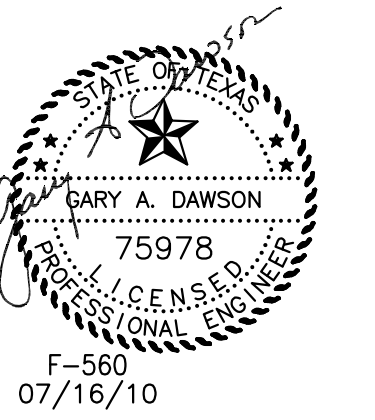


4	8 SEP 10	AMENDMENT 6
3	15 JUL 10	FINAL CORRECTED
2	18 JUN 10	FINAL SUBMITTAL
1	7 MAY 10	65% SUBMITTAL
NO DATE		DESCRIPTION

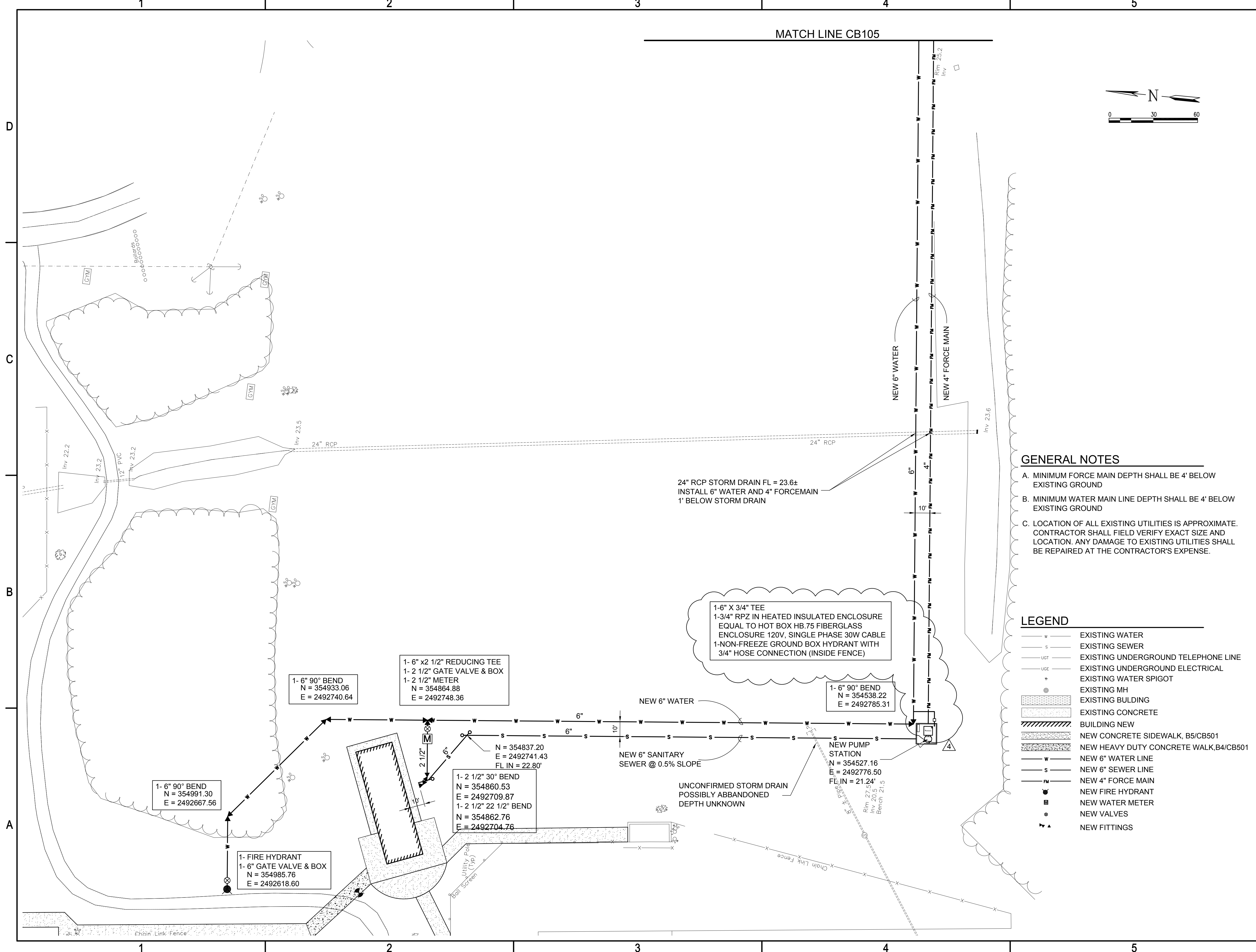
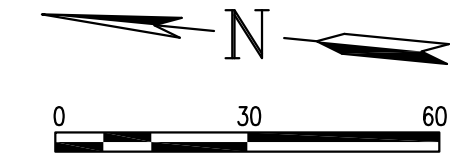
ISSUING OFFICE: LUBBOCK PROJECT NO: 8144.09

INDEX OF DRAWINGS

G-002



MATCH LINE CB105



- GENERAL NOTES**
- MINIMUM FORCE MAIN DEPTH SHALL BE 4' BELOW EXISTING GROUND
 - MINIMUM WATER MAIN LINE DEPTH SHALL BE 4' BELOW EXISTING GROUND
 - LOCATION OF ALL EXISTING UTILITIES IS APPROXIMATE. CONTRACTOR SHALL FIELD VERIFY EXACT SIZE AND LOCATION. ANY DAMAGE TO EXISTING UTILITIES SHALL BE REPAIRED AT THE CONTRACTOR'S EXPENSE.

- LEGEND**
- w — EXISTING WATER
 - s — EXISTING SEWER
 - UGT — EXISTING UNDERGROUND TELEPHONE LINE
 - UGE — EXISTING UNDERGROUND ELECTRICAL
 - ⊕ — EXISTING WATER SPIGOT
 - ⊙ — EXISTING MH
 - ▭ — EXISTING BUILDING
 - ▭ — EXISTING CONCRETE
 - ▨ — BUILDING NEW
 - ▨ — NEW CONCRETE SIDEWALK, B5/CB501
 - ▨ — NEW HEAVY DUTY CONCRETE WALK, B4/CB501
 - w— NEW 6" WATER LINE
 - s— NEW 6" SEWER LINE
 - FM— NEW 4" FORCE MAIN
 - ⊕ — NEW FIRE HYDRANT
 - ⊙ — NEW WATER METER
 - ⊙ — NEW VALVES
 - ▲ — NEW FITTINGS

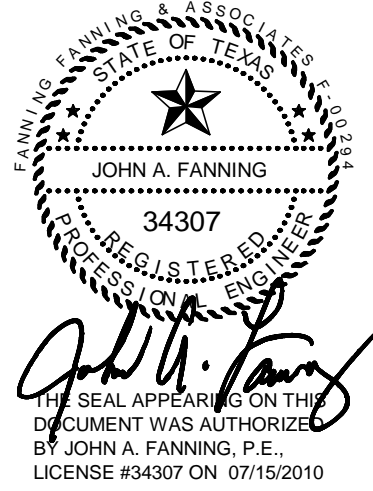
TITLE IX ATHLETIC IMPROVEMENTS MCB CAMP LEJEUNE, NC

KEY PLAN

NO	DATE	DESCRIPTION
4	8 SEP 10	AMENDMENT 6
3	15 JUL 10	FINAL CORRECTED
2	18 JUN 10	FINAL SUBMITTAL
1	7 MAY 10	65% SUBMITTAL
NO DATE		DESCRIPTION

ISSUING OFFICE: LUBBOCK PROJECT NO: 8144.09

UTILITY PLAN 1 OF 2



FA FANNING, FANNING & ASSOCIATES
CONSULTING ENGINEERS
2555 74th STREET LUBBOCK, TEXAS 79423
(806) 745-2533

**TITLE IX ATHLETIC IMPROVEMENTS
MCB
CAMP LEJEUNE, NC**

KEY PLAN



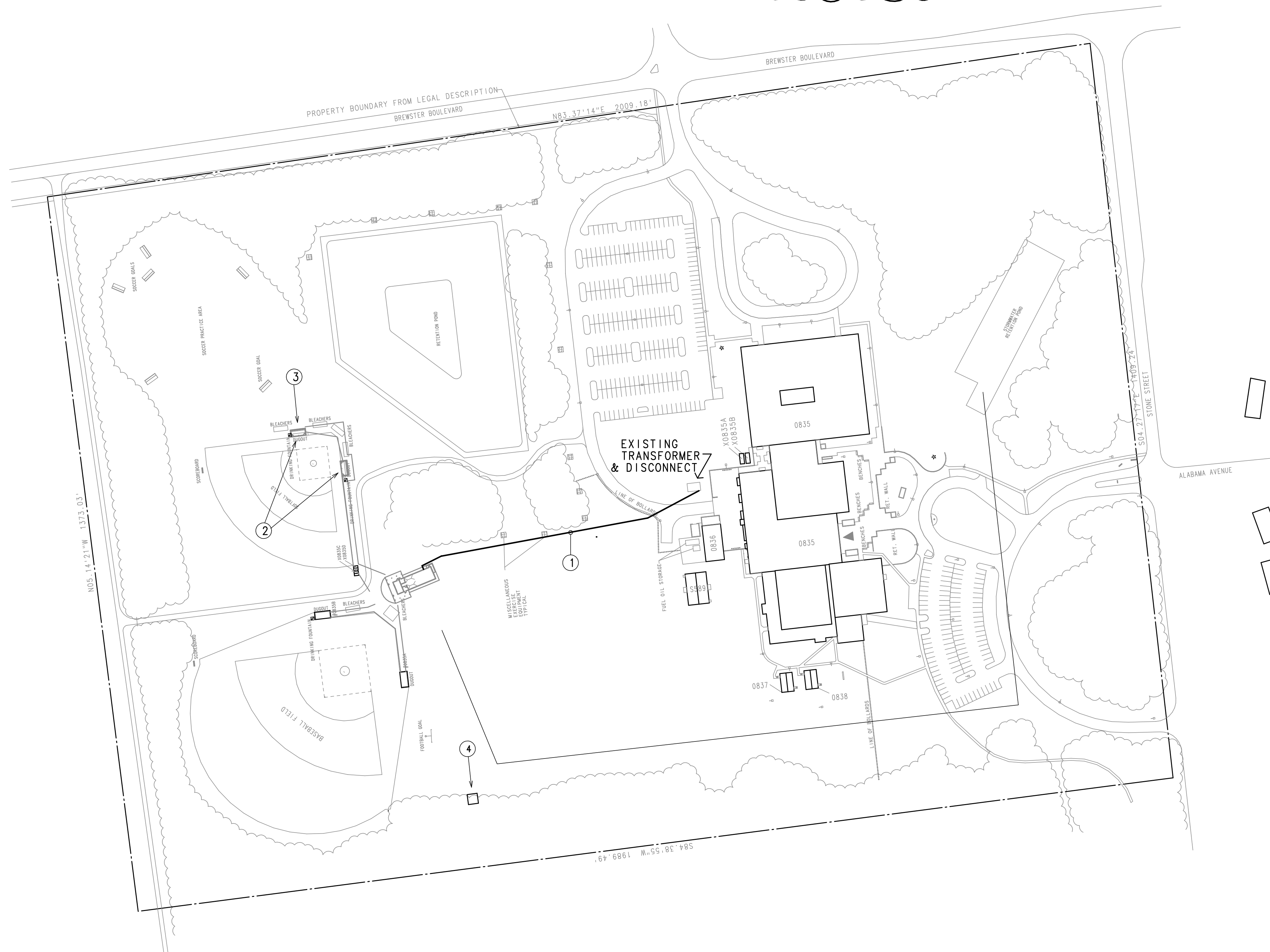
NO	DATE	DESCRIPTION
4	08 SEPT 10	AMENDMENT 6
3	15 JULY 10	FINAL CORRECTED
2	18 JUN 10	FINAL SUBMITTAL
1	7 MAY 10	65% SUBMITTAL

ISSUING OFFICE: LUBBOCK PROJECT NO. 8144.09

ELECTRICAL SITE PLAN

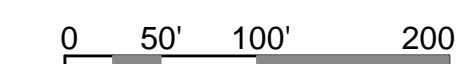
NOTES INDICATED BY "○":

- ① CONNECT NEW SERVICE FOR NEW BUILDING TO SECONDARY OF EXISTING TRANSFORMER.
- ② PROVIDE AND INSTALL WEATHERPROOF, INUSE, DEDICATED RECEPTACLES IN EACH SOFTBALL DUGOUT. SEE SHEET E-301.
- ③ PROVIDE AND INSTALL WEATHERPROOF, INUSE, DEDICATED RECEPTACLE AT FUTURE SOFTBALL BATTING CAGE. PROVIDE 3' ABOVE GROUND STEEL TUBE COLUMN TO MOUNT RECEPTACLE TO. COORDINATE LOCATION WITH SCHOOL
- ④ CONNECT NEW PUMP STATION TO M-7. MOUNT TYPE A LIGHT FIXTURE ON EAST AND WEST FENCE RAIL OR POST ON A CAST BOX. CONNECT THROUGH FUSED NEMA 3R DISCONNECT TO SECONDARY OF DRY TYPE TRANSFORMER. EXTEND A 120 VOLT FUSED CIRCUIT TO HEATER IN RPZ ENCLOSURE.



SITE PLAN

1"=100'0"



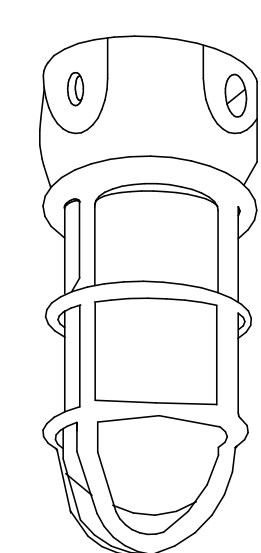
ELECTRICAL LEGEND	
SYMBOL	DESIGNATION
	WALL MOUNTED LIGHT FIXTURE, TYPE NOTED
	FLUORESCENT LIGHT FIXTURE, TYPE NOTED
	FLUORESCENT LIGHT FIXTURE, ON EMERGENCY POWER
	SPST WALL SWITCH
	OCCUPANCY SENSOR SWITCH TYPE C4
	SPST KEY SWITCH
	OCCUPANCY SENSOR POWER PACK
	OCCUPANCY SENSOR TYPE C1
	DUPLEX RECEPTACLE, 20A, 125V, 2P, 3W, GROUNDED
	GROUND FAULT INTERRUPTER RECEPTACLE
	JUNCTION BOX
	LIGHTING AND APPLIANCE PANEL
	DISTRIBUTION PANEL
	CIRCUIT INDICATION (NO. OF WIRES: GROUND/HOT/NEUTRAL SHOWN)
	SWITCH LEG INDICATION
	CIRCUIT RUN TO PANEL (NO. OF WIRES SHOWN)
	MOTOR
	MOTOR STARTER
	DISCONNECT SWITCH
	THERMOSTAT
	UNDERGROUND
	WEATHERPROOF
	ELECTRIC WATER COOLER
	EXHAUST FAN
	GROUND FAULT INTERRUPTER

LIGHTING FIXTURE SCHEDULE							
TYPE	COE TYPE	DESCRIPTION	VOLTS	LAMPS	WATTS	NOTES	
A	SF11	Wall Mount, Vapor-Tight Fluorescent	120	1-42W TTTL	51	MOUNT CAST JUNCTION BOX ON FENCE RAIL OR POST	△
B2	RF7	Security Recessed Fluorescent	120/277	2-F32/T8	61	---	
B2E	RF7	Security Recessed Fluorescent	120/277	2-F32/T8	61	EMERGENCY BATTERY PACK	
C2	PF6	Industrial Fluorescent	120/277	2-48HO/T12	61	WIRE GUARD	
C2E	PF6	Industrial Fluorescent	120/277	2-48HO/T12	61	EMERGENCY BATTERY PACK	
D	EH5	Building Mounted, Night Sky Compliant Fixture	277	1-100W/MH	130	Pulse Start MH	
D2	PF8	Vandal Resistant Industrial Fluorescent	120/277	2-F32/T8	61	---	
D2E	PF8	Vandal Resistant Industrial Fluorescent	120/277	2-F32/T8	61	EMERGENCY BATTERY PACK	
D3	SF3	Surface Mounted Industrial Fluorescent	120/277	3-F32/T8	91	1-1 LAMP BALLAST & 1-2 LAMP BALLAST	

EMERGENCY BATTERY PACKS SHALL HAVE 1100 LUMEN OUTPUT. CATALOG NUMBER FEATURES OVER-RIDE COE DETAIL

CORPS OF ENGINEERS
TYPE: SF11

DEPARTMENT OF THE ARMY



FEATURES

LAMP TYPE: 42W TTT
PROFILE: 1 LAMP
SHIELDING: CLEAR GLASS GLOBE
BALLAST: ELECTRONIC

OPTIONS

MOUNTING: ARM MOUNT ADAPTER

NOM. DIMENSIONS 111 mm X 251 mm
(4 3/8" DIA. X 9 7/8" H)

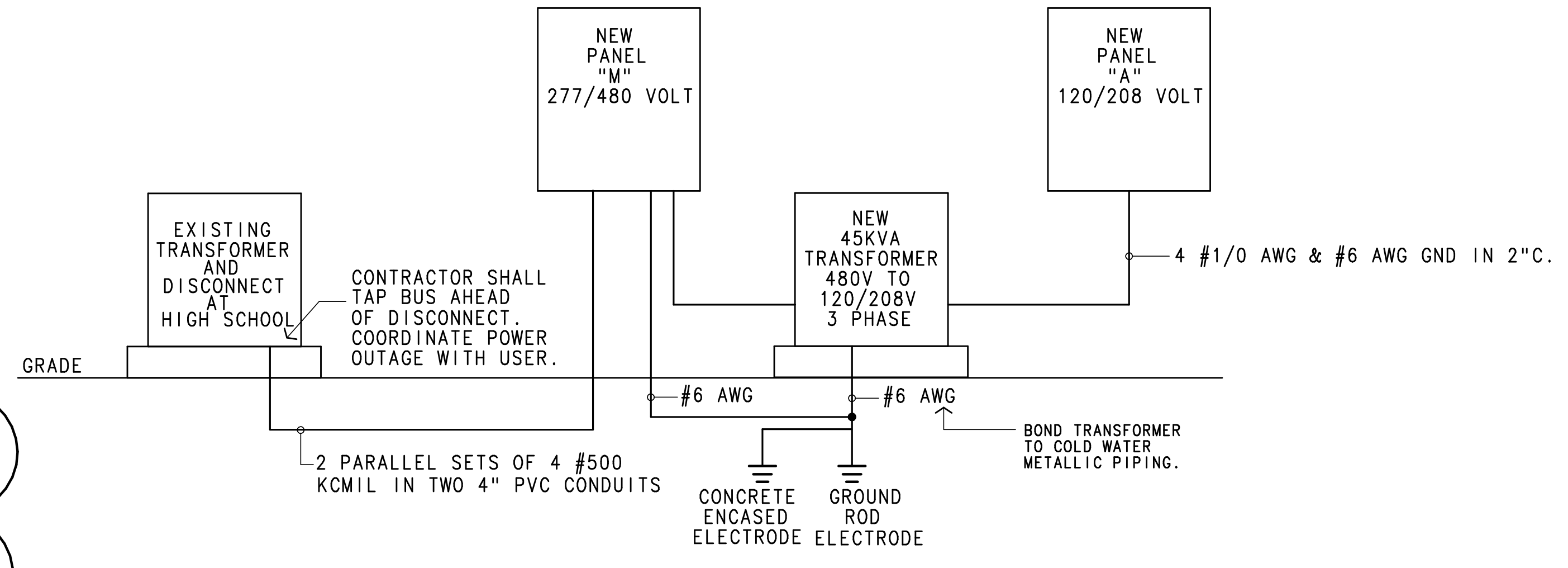
GENERAL DESCRIPTION

HOUSING: 30 PERCENT GLASS-FILLED THERMOPLASTIC POLYESTER OR CAST ALUMINUM

ELECTRICAL: 120 VOLT BALLAST

FINISH: MOLDED IN NON-GRAYING FINISH

SURFACE MOUNTED COMPACT FLUORESCENT VAPOR TIGHT JELLY JAR WITH WIRE GUARD MOUNTED TO CAST BOX ON INSIDE OF FENCE



ELECTRICAL RISER
NO SCALE




PARKHILL SMITH & COOPER



FANNING, FANNING & ASSOCIATES
CONSULTING ENGINEERS
2555 74th STREET LUBBOCK, TEXAS 79423
(806) 745-2533

TITLE IX ATHLETIC IMPROVEMENTS
MCB
CAMP LEJEUNE, NC

KEY PLAN

08 SEPT 10	AMENDMENT 6
3 15 JULY 10	FINAL CORRECTED
2 18 JUN 10	FINAL SUBMITTAL
1 7 MAY 10	65% SUBMITTAL
NO DATE	DESCRIPTION

ISSUING OFFICE: LUBBOCK PROJECT NO: 8144-09

ELECTRICAL SCHEDULES & RISER