

AMENDMENT OF SOLICITATION/MODIFICATION OF CONTRACT			1. CONTRACT ID CODE	PAGE 1 OF 9 PAGES
2. AMENDMENT/MODIFICATION NO. AMENDMENT NO. 0006		3. EFFECTIVE DATE 09/09/10	4. REQUISITION/PURCHASE REQ. NO.	5. PROJECT NO. (If applicable) 10-0216
6. ISSUED BY CODE		CODE mks	7. ADMINISTERED BY (If other than Item 6) CODE See Item 6	
Officer in Charge of Construction MCI-East 1005 Michael Road Camp Lejeune, NC 28547-2521				
8. NAME AND ADDRESS OF CONTRACTOR (No., street, county, State and ZIP Code)			(X)	9A. AMENDMENT OF SOLICITATION NO. N40085-10-R-0216
			X	9B. DATED (SEE ITEM 11) 08/26/10
				10A. MODIFICATION OF CONTRACT/ORDER NO.
				10B. DATED (SEE ITEM 11)
CODE	FACILITY CODE			

11. THIS ITEM ONLY APPLIES TO AMENDMENTS OF SOLICITATIONS

The above numbered solicitation is amended as set forth in Item 14. The hour and date specified for receipt of Offers is extended, is not extended. Offers must acknowledge receipt of this amendment prior to the hour and date specified in the solicitation or as amended, by one of the following methods:
 (a) By completing items 8 and 15, and returning _____ copies of the amendment; (b) By acknowledging receipt of this amendment on each copy of the offer submitted; or (c) By separate letter or telegram which includes a reference to the solicitation and amendment numbers. FAILURE OF YOUR ACKNOWLEDGMENT TO BE RECEIVED AT THE PLACE DESIGNATED FOR THE RECEIPT OF OFFERS PRIOR TO THE HOUR AND DATE SPECIFIED MAY RESULT IN REJECTION OF YOUR OFFER. If by virtue of this amendment your desire to change an offer already submitted, such change may be made by telegram or letter, provided each telegram or letter makes reference to the solicitation and this amendment, and is received prior to the opening hour and date specified.

12. ACCOUNTING AND APPROPRIATION DATA (If required)

13. THIS ITEM ONLY APPLIES TO MODIFICATION OF CONTRACTS/ORDERS. IT MODIFIES THE CONTRACT/ORDER NO. AS DESCRIBED IN ITEM 14.

CHECK ONE	A. THIS CHANGE ORDER IS ISSUED PURSUANT TO: (Specify authority) THE CHANGES SET FORTH IN ITEM 14 ARE MADE IN THE CONTRACT ORDER NO. IN ITEM 10A.
	B. THE ABOVE NUMBERED CONTRACT/ORDER IS MODIFIED TO REFLECT THE ADMINISTRATIVE CHANGES (such as changes in paying office, appropriation date, etc.) SET FORTH IN ITEM 14, PURSUANT TO THE AUTHORITY OF FAR 43.103(b).
	C. THIS SUPPLEMENTAL AGREEMENT IS ENTERED INTO PURSUANT TO AUTHORITY OF:
	D. OTHER (Specify type of modification and authority)

E. IMPORTANT: Contractor is not, is required to sign this document and return _____ copies to the issuing office.

14. DESCRIPTION OF AMENDMENT/MODIFICATION (Organized by UCF section headings, including solicitation/contract subject matter where feasible.)

10-0216, Athletic Field Improvements, DDESS

The time and date for receipt of proposals are changed to 1400, Monday, 13 September 2010.

(CONTINUED)

Except as provided herein, all terms and conditions of the document referenced in Item 9A or 10A, as heretofore changed, remains unchanged and in full force and effect.

15A. NAME AND TITLE OF SIGNER (Type or print)		16A. NAME AND TITLE OF CONTRACTING OFFICER (Type or print)	
15B. CONTRACTOR/OFFEROR		16B. UNITED STATES OF AMERICA	
15C. DATE SIGNED		16C. DATE SIGNED	
(Signature of person authorized to sign)		(Signature of Contracting Officer)	

CONTINUATION SHEET

I. CHANGES TO PROJECT MANUAL:

- A. SECTION 33 32 13.13 - PACKAGED SEWAGE LIFT STATIONS, WET WELL TYPE**
1. Paragraph 2.4 – PUMP CONTROLS, REPLACE with the following:
“2.4 PUMP CONTROLS

Provide automatic type pump operating controls recommended by the pump station manufacturer, including necessary switches, relays, and appurtenances, complete. Mount controls on a control panel. Make equipment subject to contact with sewage of corrosion-resistant metal. Provide controls with a high-level switch for remote monitoring.

2.4.1 SCADA Inputs/Outputs

- Inputs**
- 1-Commercial power status from transfer switches (available **on**/not available **off**). Provide tagged input for future transfer switch.
 - 2-Generator power status from transfer switches (available **on**/not available **off**). Provide tagged input for future transfer switch.
 - 3-Load power status from transfer switches (available **on**/not available **off**). Provide tagged input for future transfer switch.
 - 4-Pump HOA (hand, off, auto) status from front panel switch for each pump.
 - 5-Pump running status from pump contactor.
 - 6-Pump number of starts per. Day (number of starts shall reset at midnight from HMI clock) for each pump.
 - 7-Pump fail status which shall include (high temp. seal fail, and over current) for each pump.
 - 8-GPD for each pump which shall zero out at midnight.
 - 9- Float status for each float in wetwell (**on/off** status).
 - 10- Low level and high level alarm
 - 11- Generator fail. Provide tagged input for future transfer switch.
 - 12- Generator running. Provide tagged input for future transfer switch.
 - 13- Sewer chewer or macerator run status.
 - 14- Sewer chewer or macerator fail status.
 - 15- Pump panel intrusion
 - 16- Scada panel intrusion.

- Outputs**
- 1-Remote pump start from HMI for each pump.
 - 2-Remote generator start from HMI.

2.4.2 HMI Reporting Information Required From SCADA Processor

Information Required:

1. Pump runtimes, pump # of starts, pump GPD, and station total GPD shall include (daily, weekly, monthly, yearly) totals. Reset daily at midnight, weekly on Sunday,

- monthly at end of month, yearly at end of year. Update processor clock from HMI at 03:00am. Totals shall be maintained at processor level
2. Totals shall be viewable at HMI on station display.
 3. Totals shall be printed in a report, which shall be print at 00:05am.
- Note: GPD shall be based from actual GPM"s of each pump in wetwell.

2.4.3 HMI Requirements

All HMI displays shall be exactly like existing displays with required info as stated above.

All programming shall meet Utilities Technician final approval.

Shall provide HMI ALARMING to include high level, low level, commercial power fail, load power fail, generator running, generator fail macerator fail, pump fail for each pump, pump panel intrusion, Scada panel intrusion in hand position or off position.

Consult with local instrument technician for any additional information or assistance before making modifications.

2.4.4 SCADA Requirements

Must furnish local audible & lighted alarm tied to **HIGH LEVEL** with silence button.

PLC should be (Allenbradley Compactlogix)

Processor shall be L32E

All I/O shall go through a fusible terminal block with light indicators if blown.

SCADA cabinet shall be NEMA 4x rated stainless steel.

SCADA cabinet shall contain the following components: main breaker for power.

Lighting protection on main power, phase monitor, **UPS backup power (15 minutes minimum requirements) for Cabinet**, intrusion switch, 120vac outlet for UPS and laptop, PLC, power supplies. Fuses and terminal blocks as required.

All required wiring.

CABINET SHALL MEET ALL ELECTRICAL CODES AND CONFORM WITH ALL SAFETY REGULATIONS INCVLUDING (UL) SPECS.

SCADA cabinet shall provide a way to be locked by a padlock.

2.4.5 Telemetry Radio

Radio For telemetry shall be Dataradio T96SR (Frequency will be provided by wastewater Technician) PN: 242-4616-xxx.

Antenna shall be mounted on 20-foot aluminum pole grounded via three ground rods in

grid with concrete base. Antenna should be capable of being taken down for maintenance and stationary for high wind while in the upright condition. Mount within 20" of Lift Station.

Antenna RF cable shall have lightning protection at entrance to the bottom of SCAD cabinet. Drip-loops at top of pole and at entrance to SCADA cabinet.

Antenna shall be maxrad. (Three element YAGI type). PN;MYA1403N, or equal.

2.4.6 Spare Parts Required

Fuses 5ea.
Spare I/O cards
Spare Processor

2.4.7 Documentation Required

Schematic and manual,,s for installed equipment
Software for programming plc and backup copy of program installed."

B. SECTION 33 32 13.13 - PACKAGED SEWAGE LIFT STATIONS, WET WELL TYPE,

1. ADD the following paragraph:

"2.20 ADDITIONAL LIFT STATION REQUIREMENTS

No electrical junction boxes in the wet wells.

Audible and Visual alarm installed on the Lift Stations (STATE REQUIREMENT).

Provide at each station a three-wire receptacle plus ground for a portable generator in case there is an external power outage. Provide at each station a double-throw switch in an enclosure conforming to NEMA 250, Type 3R.

No grinder pumps, no name brand (HOMA PUMPS).

3 Phase; NON clog submersible sewer pumps.

Provide emergency connection point to force main to allow use of portable pumps.

Hand Winch or Monorail to pull pups with.

No bubbler system.

Float Balls or single chain or Transducers to control pumps.

Communications (SEWER CHEWERS) and bypass Bar Screens with electric motors at ground level.

Provide a fused (primary & secondary) 3KVA stepdown, dry type, NEMA 3R transformer (480V-120/240V, single phase) next to control panel for SCADA power and 120V receptacle power."

II. CHANGES TO THE DRAWINGS:

A. SHEET G-002

1. "Amendment 6" was added to the Index of Drawings to reflect changes to drawings G-002, CB104, E-401 and E-501.

B. SHEET CB 104

1. ADD $\frac{3}{4}$ " water line connected to the 6" main to provide water service to a ground box hydrant with $\frac{3}{4}$ " hose bib protected from backflow with a $\frac{3}{4}$ " RPZ in a heated, insulated enclosure as shown on the enclosed drawing.

C. SHEET E-501

1. Fixture SF11 detail was added for the Type "A" fixture that is indicated to be installed on the Lift Station fence. Fixture was also added to Light Fixture Schedule.

D. SHEET E-401

1. Note 4 was modified add lighting to Lift Station and to add a circuit to the RPZ enclosure for freeze protection.

1

2

3

4

5

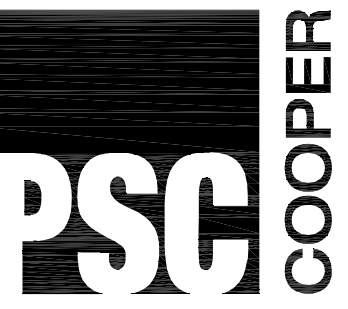
D

C

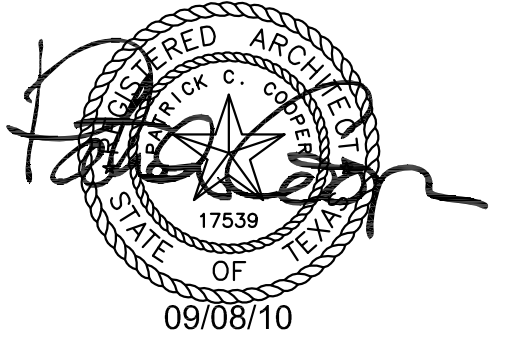
B

A

SHEET NO.	65% SUBMITTAL	FINAL SUBMITTAL	FINAL CORRECTED	AMMENDMENT 6	TITLE	SHEET NO.	65% SUBMITTAL	FINAL SUBMITTAL	FINAL CORRECTED	AMMENDMENT 6	TITLE
GENERAL					PLUMBING						
G-001	●	●	●		COVER SHEET	P-101	●	●	●		FLOOR PLAN PLUMBING
G-002	●	●	●	●	INDEX OF DRAWINGS	P-201	●	●	●		PLUMBING SCHEDULES
G-003	●	●	●		ABBREVIATIONS & LEGENDS	P-202			●		PLUMBING DETAILS
G-004	●	●	●		ACCESSIBILITY GUIDELINES - BUILDING						
G-005	●	●	●		ACCESSIBILITY STANDARDS - SITE						
					MECHANICAL						
CIVIL					ELECTRICAL						
CA100			●		EXISTING CONDITIONS	M-101	●	●	●		FLOOR PLAN MECHANICAL
CA101	●	●	●		TRACK DEMOLITION PLAN	M-201	●	●	●		MECHANICAL DETAILS AND SCHEDULES
CA102	●	●	●		TRACK LAYOUT PLAN						
CA103	●	●	●		SITE GRADING PLAN	E-101	●	●	●		LIGHTING FLOOR PLAN
CA501	●	●	●		MISCELLANEOUS DETAILS	E-201	●	●	●		POWER FLOOR PLAN
CB100			●		EXISTING CONDITIONS	E-301	●	●	●		ELECTRICAL DUGOUT PLAN
CB101	●	●	●		OVERALL SITE PLAN	E-401	●	●	●	●	ELECTRICAL SITE PLAN
CB102	●	●	●		ENLARGED SITE PLAN	E-501	●	●	●	●	ELECTRICAL SCHEDULES & RISER
CB103	●	●	●		GRADING PLAN	E-502	●	●	●		LIGHTING FIXTURES
CB104	●	●	●	●	UTILITY PLAN 1 OF 2	E-503	●	●	●		LIGHTING FIXTURES
CB105	●	●	●		UTILITY PLAN 2 OF 2						
CB106			●		SEWER AND LIFT STATION DETAILS						
CB501			●	●	MISCELLANEOUS UTILITY DETAILS						
STRUCTURAL											
S-001	●	●	●		GENERAL NOTES AND TYPICAL DETAILS						
S-002	●	●	●		GENERAL NOTES AND TYPICAL DETAILS						
S-003	●	●	●		GENERAL NOTES AND TYPICAL DETAILS						
S-004	●	●	●		GENERAL NOTES AND TYPICAL DETAILS						
S-101	●	●	●		FOUNDATION PLAN AND DETAILS						
S-101B	●	●	●		GIRLS SOFTBALL DUGOUT FOUNDATION & FRAMING PLANS						
S-102	●	●	●		FRAMING PLAN AND DETAILS						
ARCHITECTURAL											
A-101	●	●	●		DIMENSIONED & ANNOTATED FLOOR PLANS						
A-101A	●	●	●		REFLECTED CEILING & ROOF PLANS						
A-101B	●	●	●		GIRLS SOFTBALL DUGOUT PLANS						
A-201	●	●	●		EXTERIOR ELEVATION						
A-202	●	●	●		INTERIOR ELEVATIONS						
A-301	●	●	●		BUILDING SECTIONS						
A-302	●	●	●		WALL SECTIONS						
A-302A	●	●	●		WALL SECTIONS						
A-302B	●	●	●		WALL SECTIONS						
A-401	●	●	●		ENLARGED PLANS						
A-501	●	●	●		DOOR DETAILS						
A-502	●	●	●		DETAILS						
A-601	●	●	●		SCHEDULES						



PARKHILL SMITH & COOPER



TITLE IX ATHLETIC IMPROVEMENTS MCB CAMP LEJEUNE, NC

KEY PLAN

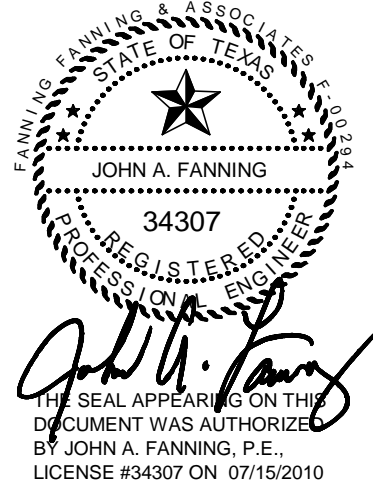


4	8 SEP 10	AMENDMENT 6
3	15 JUL 10	FINAL CORRECTED
2	18 JUN 10	FINAL SUBMITTAL
1	7 MAY 10	65% SUBMITTAL
NO DATE		DESCRIPTION

ISSUING OFFICE: LUBBOCK PROJECT NO: 8144.09

INDEX OF DRAWINGS

G-002



FFA FANNING, FANNING & ASSOCIATES
CONSULTING ENGINEERS
2555 74th STREET LUBBOCK, TEXAS 79423
(806) 745-2533

**TITLE IX ATHLETIC IMPROVEMENTS
MCB
CAMP LEJEUNE, NC**

KEY PLAN



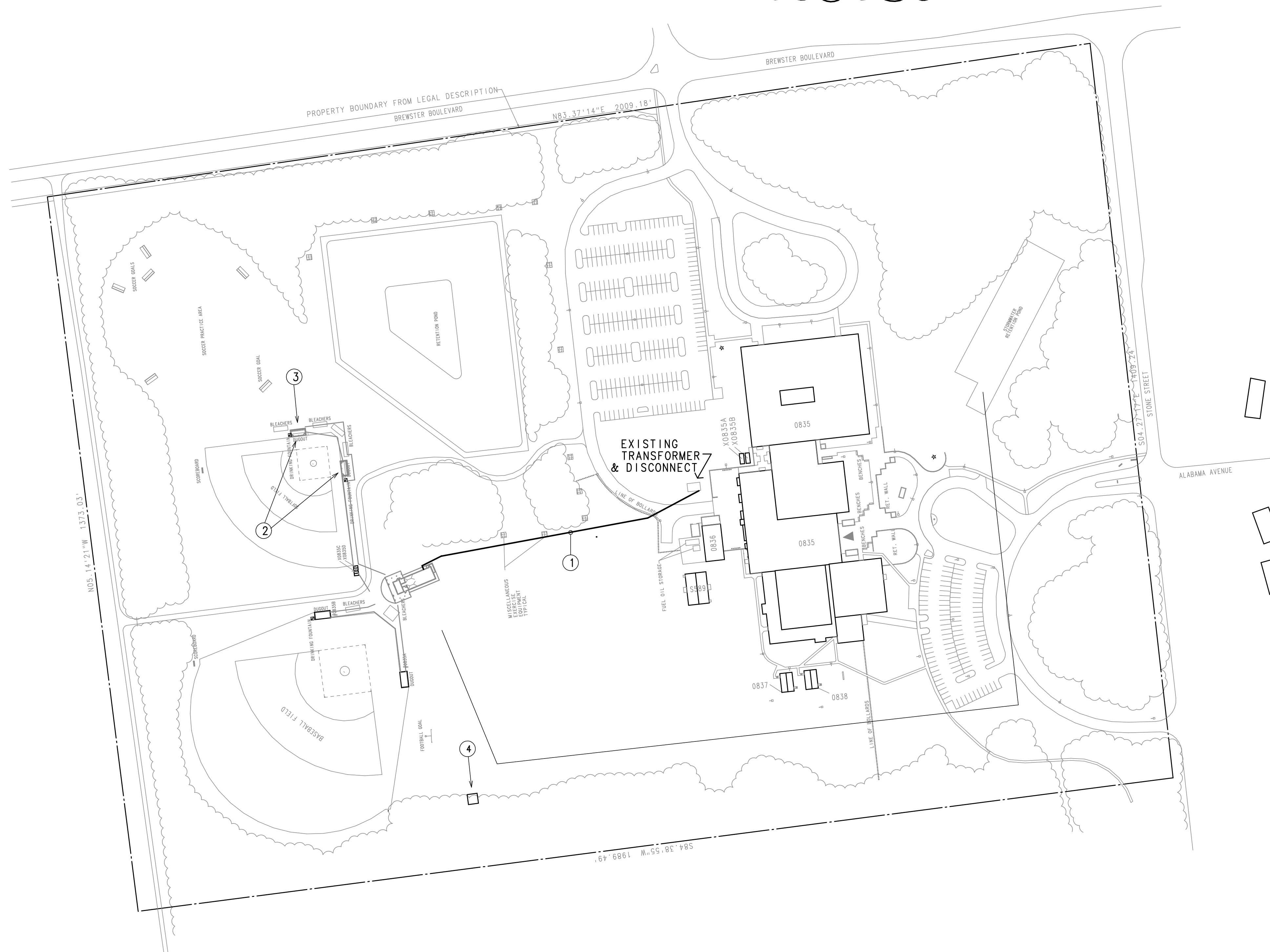
NO	DATE	DESCRIPTION
4	08 SEPT 10	AMENDMENT 6
3	15 JULY 10	FINAL CORRECTED
2	18 JUN 10	FINAL SUBMITTAL
1	7 MAY 10	65% SUBMITTAL

ISSUING OFFICE: LUBBOCK PROJECT NO: 8144.09

ELECTRICAL SITE PLAN

NOTES INDICATED BY "○":

- ① CONNECT NEW SERVICE FOR NEW BUILDING TO SECONDARY OF EXISTING TRANSFORMER.
- ② PROVIDE AND INSTALL WEATHERPROOF, INUSE, DEDICATED RECEPTACLES IN EACH SOFTBALL DUGOUT. SEE SHEET E-301.
- ③ PROVIDE AND INSTALL WEATHERPROOF, INUSE, DEDICATED RECEPTACLE AT FUTURE SOFTBALL BATTING CAGE. PROVIDE 3' ABOVE GROUND STEEL TUBE COLUMN TO MOUNT RECEPTACLE TO. COORDINATE LOCATION WITH SCHOOL
- ④ CONNECT NEW PUMP STATION TO M-7. MOUNT TYPE A LIGHT FIXTURE ON EAST AND WEST FENCE RAIL OR POST ON A CAST BOX. CONNECT THROUGH FUSED NEMA 3R DISCONNECT TO SECONDARY OF DRY TYPE TRANSFORMER. EXTEND A 120 VOLT FUSED CIRCUIT TO HEATER IN RPZ ENCLOSURE.



SITE PLAN

1"=100'0"

0 50' 100' 200'



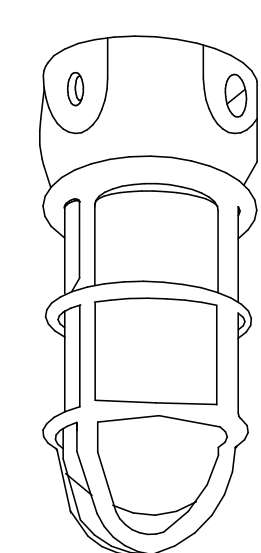
ELECTRICAL LEGEND	
SYMBOL	DESIGNATION
	WALL MOUNTED LIGHT FIXTURE, TYPE NOTED
	FLUORESCENT LIGHT FIXTURE, TYPE NOTED
	FLUORESCENT LIGHT FIXTURE, ON EMERGENCY POWER
	SPST WALL SWITCH
	OCCUPANCY SENSOR SWITCH TYPE C4
	SPST KEY SWITCH
	OCCUPANCY SENSOR POWER PACK
	OCCUPANCY SENSOR TYPE C1
	DUPLEX RECEPTACLE, 20A, 125V, 2P, 3W, GROUNDED
	GROUND FAULT INTERRUPTER RECEPTACLE
	JUNCTION BOX
	LIGHTING AND APPLIANCE PANEL
	DISTRIBUTION PANEL
	CIRCUIT INDICATION (NO. OF WIRES: GROUND/HOT/NEUTRAL SHOWN)
	SWITCH LEG INDICATION
	CIRCUIT RUN TO PANEL (NO. OF WIRES SHOWN)
	MOTOR
	MOTOR STARTER
	DISCONNECT SWITCH
	THERMOSTAT
	UNDERGROUND
	WEATHERPROOF
	ELECTRIC WATER COOLER
	EXHAUST FAN
	GROUND FAULT INTERRUPTER

LIGHTING FIXTURE SCHEDULE							
TYPE	COE TYPE	DESCRIPTION	VOLTS	LAMPS	WATTS	NOTES	
A	SF11	Wall Mount, Vapor-Tight Fluorescent	120	1-42W TTTL	51	MOUNT CAST JUNCTION BOX ON FENCE RAIL OR POST	4
B2 B2E	RF7	Security Recessed Fluorescent Security Recessed Fluorescent	120/277 120/277	2-F32/T8 2-F32/T8	61 61	EMERGENCY BATTERY PACK	
C2 C2E	PF6	Industrial Fluorescent Industrial Fluorescent	120/277 120/277	2-48HO/T12 2-48HO/T12	61 61	WIRE GUARD EMERGENCY BATTERY PACK	
D	EH5	Building Mounted, Night Sky Compliant Fixture	277	1-100W/MH	130	Pulse Start MH	
D2 D2E	PF8	Vandal Resistant Industrial Fluorescent Vandal Resistant Industrial Fluorescent	120/277 120/277	2-F32/T8 2-F32/T8	61 61	EMERGENCY BATTERY PACK	
D3	SF3	Surface Mounted Industrial Fluorescent	120/277	3-F32/T8	91	1-1 LAMP BALLAST & 1-2 LAMP BALLAST	

EMERGENCY BATTERY PACKS SHALL HAVE 1100 LUMEN OUTPUT.
CATALOG NUMBER FEATURES OVER-RIDE COE DETAIL

CORPS OF ENGINEERS
TYPE: SF11

DEPARTMENT OF THE ARMY

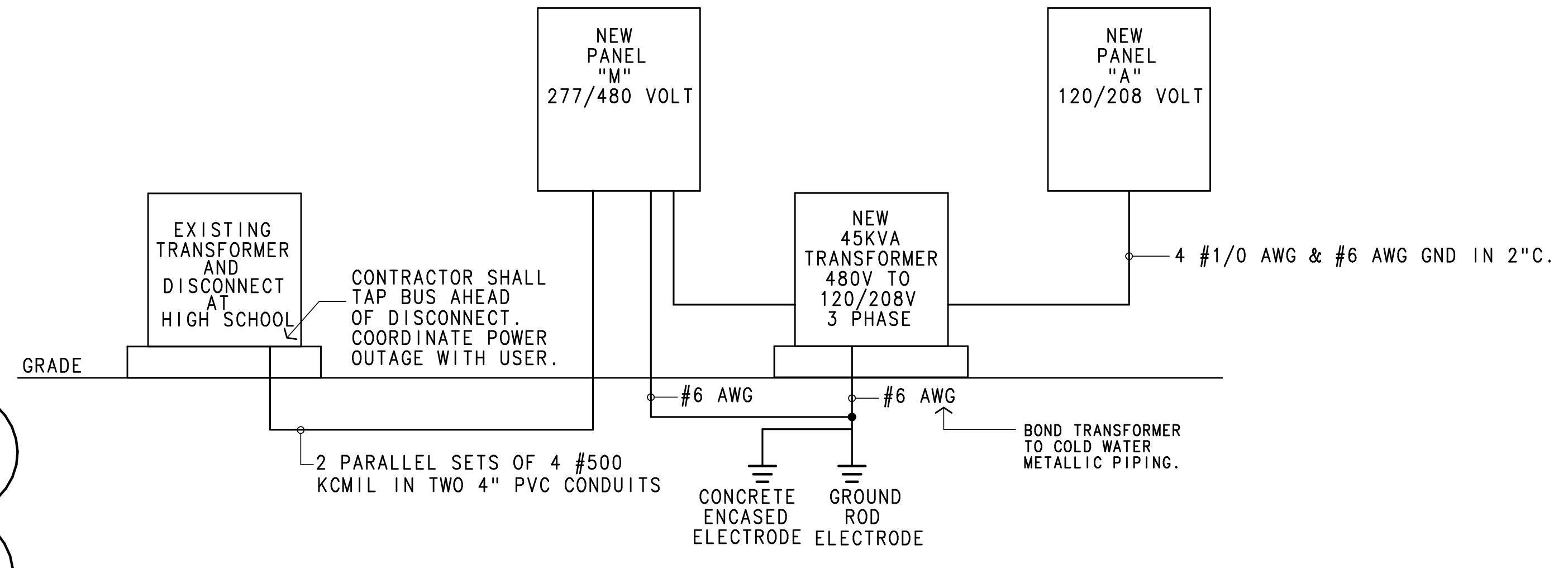


FEATURES
LAMP TYPE: 42W TTT
PROFILE: 1 LAMP
SHIELDING: CLEAR GLASS GLOBE
BALLAST: ELECTRONIC
OPTIONS
MOUNTING: ARM MOUNT ADAPTER

NOM. DIMENSIONS 111 mm X 251 mm
(4 3/8" DIA. X 9 7/8" H)

GENERAL DESCRIPTION
HOUSING: 30 PERCENT GLASS-FILLED THERMOPLASTIC POLYESTER OR CAST ALUMINUM
ELECTRICAL: 120 VOLT BALLAST
FINISH: MOLDED IN NON-GRAYING FINISH

SURFACE MOUNTED COMPACT FLUORESCENT
VAPOR TIGHT JELLY JAR WITH WIRE GUARD
MOUNTED TO CAST BOX ON INSIDE OF FENCE



ELECTRICAL RISER
NO SCALE




PARKHILL SMITH & COOPER



FANNING, FANNING & ASSOCIATES
CONSULTING ENGINEERS
2555 74th STREET LUBBOCK, TEXAS 79423
(806) 745-2533

TITLE IX ATHLETIC IMPROVEMENTS
MCB
CAMP LEJEUNE, NC

KEY PLAN

08 SEPT 10	AMENDMENT 6
3 15 JULY 10	FINAL CORRECTED
2 18 JUN 10	FINAL SUBMITTAL
1 7 MAY 10	65% SUBMITTAL
NO DATE	DESCRIPTION

ISSUING OFFICE: LUBBOCK PROJECT NO: 8144-09

ELECTRICAL SCHEDULES & RISER